



# AUCTION

**LEADING THE INDUSTRY SINCE 1945**

**Thursday – November 2, 2017 – 5:15 PM**

## **Brick Home On 3.5 Acres**

**2,800 SQ. FT. COMMERCIAL STEEL BUILDING**

East Twp. – Carroll County – No Zoning – Carrollton Schools

Sellers have moved out of state,

**ABSOLUTE AUCTION**, All sells to highest bidder(s) on location:

**7011 Bane Rd. NE, Kensington, OH 44427**

**Directions:** East from Augusta (SR 9) on Aurora Rd. to left onto Bane Rd. Watch for KIKO signs.



Information is believed to be accurate but not guaranteed.



**330.455.9357 • kikoauctions.com**





**KIKO AUCTIONEERS**

2722 Fulton Dr. NW, Canton, OH 44718

[kikoauctions.com](http://kikoauctions.com)

**Thursday – November 2, 2017 – 5:15 PM**

**Brick Home On 3.5 Acres  
2,800 Sq. Ft. Commercial Steel  
Building – East Twp. – Carroll County  
No Zoning – Carrollton Schools**

7011 Bane Rd. NE, Kensington, OH 44427



**Members – State and National Auctioneers Association**



**REAL ESTATE:** Brick home on 3.58 acres. Attached oversized 2-car garage, 24 x 32 fenced-in area for live-stock with outbuildings. Nice commercial steel building with 2,804 sq. ft. with 12' and 10' overhead doors. Building features in-floor radiant heat and a 22 x 25 finished office area. An outdoor wood furnace is plumbed into the house and shop building for heat. This 4-bedroom, 4-bath home has plenty of room to grow and has a finished walk-out basement, a large open oak kitchen and dining area, first floor laundry, and a large walk-out deck on the main level that overlooks the property. No zoning, Carrollton Schools. All mineral rights owned by seller to transfer, subject to leases of record. Country setting with loads of living. Check it out!

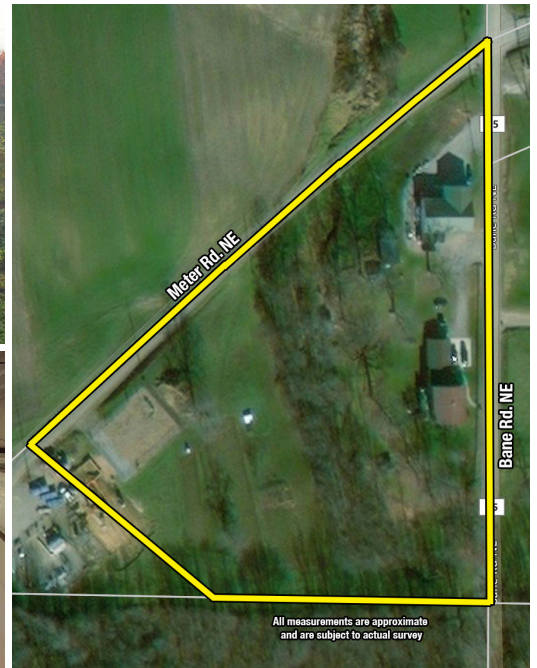
**NOTE:** Home & shop open for viewing one hour prior to bidding.

**TERMS ON REAL ESTATE:** 10% down auction day, balance due at closing. A 10% buyer's premium will be added to the highest bid to establish the purchase price, which goes to the seller. Any desired inspections must be made prior to bidding. All information contained herein was derived from sources believed to be correct. Information is believed to be accurate but not guaranteed.

**AUCTION BY ORDER OF:**  
Nathan & Joyce Otto

**REALTOR:** Tara King, ext. 172,  
330-205-7290,  
[tking@kikocompany.com](mailto:tking@kikocompany.com)

**AUCTIONEERS/REALTORS:**  
Anna C. VanDyke, ext. 148,  
330-309-8044,  
[anna@kikocompany.com](mailto:anna@kikocompany.com) &  
Matthew Kiko, AARE



**330.455.9357 • [kikoauctions.com](http://kikoauctions.com)**

